



KIEL UNIVERSITY

ERASMUS-Code	D KIEL 01
ECHE	28321
OID	E10208614 (PIC 999839529)
Websites Facebook Instagram	www.uni-kiel.de www.international.uni-kiel.de www.facebook.com/ic.uni.kiel/ www.instagram.com/ic.uni.kiel/ www.instagram.com/incomings.ic.cau/
Website for Erasmus Incomings Video Erasmus in Kiel	https://t1p.de/erasmus-incomings_cau https://youtu.be/8lda1BHWdDA
Postal Address	Christian-Albrechts-Universität zu Kiel (<i>full legal name</i>) International Center, Westring 400, 24118 Kiel, Germany

INTERNATIONAL CENTER

ERASMUS-Institutional Coordinators (Mobility and Agreements)	Antje VOLLAND, M.A. / Dr. Elisabeth GRUNWALD Tel.: +49 431 880-3717 (3022) go-out@uv.uni-kiel.de (same contact)
ERASMUS Incomings	Nadine MÜLLER Tel.: +49 431 880-5517 erasmus-incomings@uv.uni-kiel.de

APPLICATION INFORMATION FOR INCOMING STUDENTS

Academic Calendar / Lecture and Examination Period	Summer Semester 2024: April 1st – September 30st <ul style="list-style-type: none"> ➤ Lecture period: April 8th – July 19th Winter Semester 2024/25: October 1st – March 31st <ul style="list-style-type: none"> ➤ Lecture period: October 14th – Feb 14th
Application Deadline for ERASMUS-Students (Incomings)	Winter Semester: June 15 Summer Semester: January 15
How to apply & detailed information for Erasmus Incomings	https://t1p.de/erasmus-incomings_cau
Language Requirements	At least B1 German OR English. Medicine / German Philology: B2 German
Course Schedule	http://univis.uni-kiel.de/form http://univis.uni-kiel.de/go/lec?chapter=/. *erasmus.*
Special Courses for Incomings	www.international.uni-kiel.de/en/study-in-kiel?set_language=en
International Study Programs	https://www.international.uni-kiel.de/en/course-catalogue/study-programmes

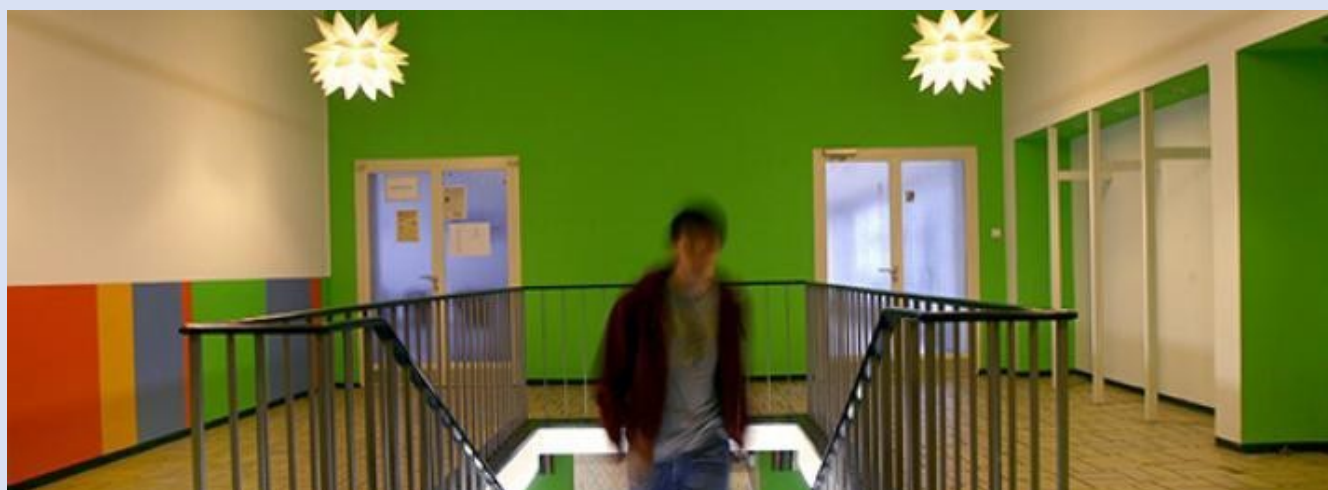


FURTHER INFORMATION FOR ACCEPTED STUDENTS

Enrolment for ERASMUS Students	Winter Semester: August 1 st – September 30 th Summer Semester: February 15 th – March 15 th
Orientation days for exchange students (more information here)	Winter Semester: beginning of October Summer Semester: last week in March
Tutors	https://www.international.uni-kiel.de/en/incomings/starting-your-studies-orientation/tutors
Arrival Information	https://www.international.uni-kiel.de/en/incomings/planning-arrival-and-stay/information-on-your-arrival-to-kiel
Visa and Insurance	https://www.international.uni-kiel.de/en/incomings/planning-arrival-and-stay/visa https://www.international.uni-kiel.de/en/incomings/planning-arrival-and-stay/insurance
Support for Disabled Students	Dagny STREICHER - Tel.: +49 431 880 5885 barrierefrei-studieren@uv.uni-kiel.de
ESN Kiel – Erasmus Student Network Kiel	https://kiel.esn-germany.de/ https://www.instagram.com/esnkiel/

FACILITIES AND SERVICES

Language Center (German Courses during the semester)	https://www.zfs-daf.uni-kiel.de/en?set_language=en
German Prep Courses for basic, intermediate and advanced level in September	https://www.international.uni-kiel.de/en/summer-courses-in-kiel/preparation-course
Summer School German Language and Culture	https://www.international.uni-kiel.de/en/incomings/summer-courses-in-kiel/international-summercourse
Social Services for International Students (offered by Studentenwerk SH: help for Integration, how to meet people in Kiel, financing, working in Germany ...)	https://studentenwerk.sh/en/international-students
Study Buddy Programme (offered by Studentenwerk SH)	https://studentenwerk.sh/en/study-buddy-become



ACCOMODATION

The International Center reserves a limited amount of dorms for International Students – application form can be found on our website (see the link)

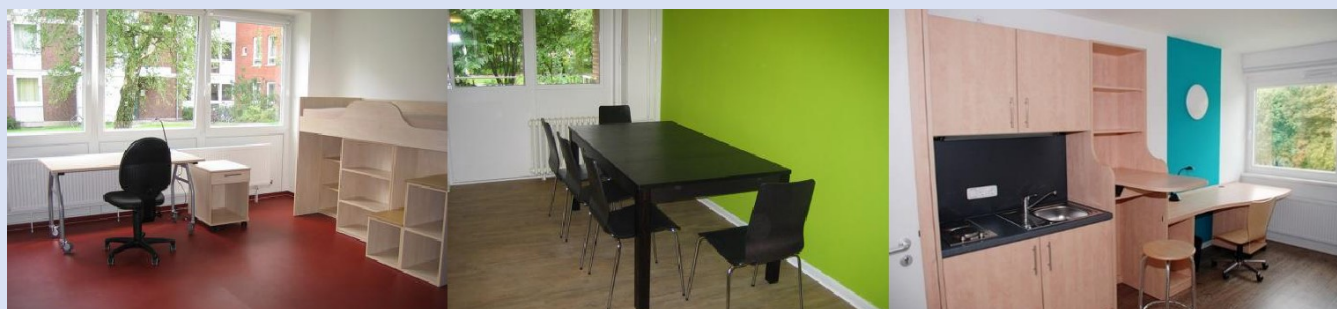
Students with disabilities may please consult our International Office. There are a limited number of barrier-free rooms in dormitories available at Kiel University.

<https://www.international.uni-kiel.de/en/incomings/planning-arrival-and-stay/accomodation>

More places are available through direct application with the Studentenwerk SH

<https://ipack.studentenwerk.sh/#admission>

Our dormitory rooms cost between 201 and 451 Euro per month
(<https://studentenwerk.sh/en/wohnheime-kiel>).



PRACTICAL INFORMATION

Video from the International Center of Kiel University

<https://www.youtube.com/watch?v=YAgeaTBVvFE>

Videos Kiel City

www.youtube.com/user/LandeshauptstadtKiel

Imagefilm Kiel.Sailing City

<https://www.youtube.com/watch?v=IJr3CKplSEk>

Information about Kiel

<https://www.kiel-sailing-city.de/en.html>
www.kieler-woche.de/english/index.php

Monthly Costs of Living in Euro
([more information here](#))

Health Insurance:	80 €
Rent including additional costs	280 €
Food, Clothes, etc.	323 €
Study Costs (Books, etc.):	170 €
TOTAL:	853 €

Cost of Living Comparisons

www.expatistan.com/cost-of-living



ACTIVITIES, SERVICES AND LEISURE TIME

Orientation Programme	Offered by the International Center at the beginning of each semester with information about important aspects of studying at Kiel University: https://www.international.uni-kiel.de/en/incomings/starting-your-studies-orientation/orientation-program
Sailing Programme	During the sailing season, the International Center provides the opportunity to enjoy the Bay of Kiel and the Baltic Sea on a yacht, the Albertina. No sailing skills are necessary, as the yacht is manned by experienced crews (who enjoy explaining everything and who also give participants the chance to help as long as weather conditions allow). https://www.international.uni-kiel.de/en/incomings/during-your-studies/activities-events/sailing-programme
Study Buddy Programme	Study Buddy is a mentoring programme for international and German students, with the intention to encourage the contact and exchange with each other. The Study Buddies meet in their free time and do what is fun for them. https://studentenwerk.sh/en/study-buddy-become
<h3>KIEL IN SUMMER ...</h3>	
Kiel Week (June)	<i>Kieler Woche</i> is the largest summer festival in Northern Europe with more than 3 Million visitors each year. www.kieler-woche.de/en/
Schleswig-Holstein Musik Festival (July and August)	The <i>Schleswig-Holstein Musik Festival</i> is one of the largest classical music festivals in the world. www.shmf.de/en/home
Wacken (August)	The biggest Heavy Metal Festival in the world. www.wacken.com/en/
Dragon Boat Fun Cup (September)	www.kielerdrachenboottage.de/
Open Air Culture	Open air musical and opera, White Night, Literature Festival in the old Botanical garden, music festival on a little beach tour with historic ferries ...
Music, Music, Music ...	Bootshafensommer Brückenfestival Fördefestival

10 reasons for Kiel University

Studying at the sea

Variety of courses in languages other than German

Free of charge German course (with ECTS)

Students from all over the world

Good assistance and monitoring

Safety

Moderate prices

Lots of sport, music and leisure activities

Clean and cheap dorm rooms

Gateway to Northern Europe

